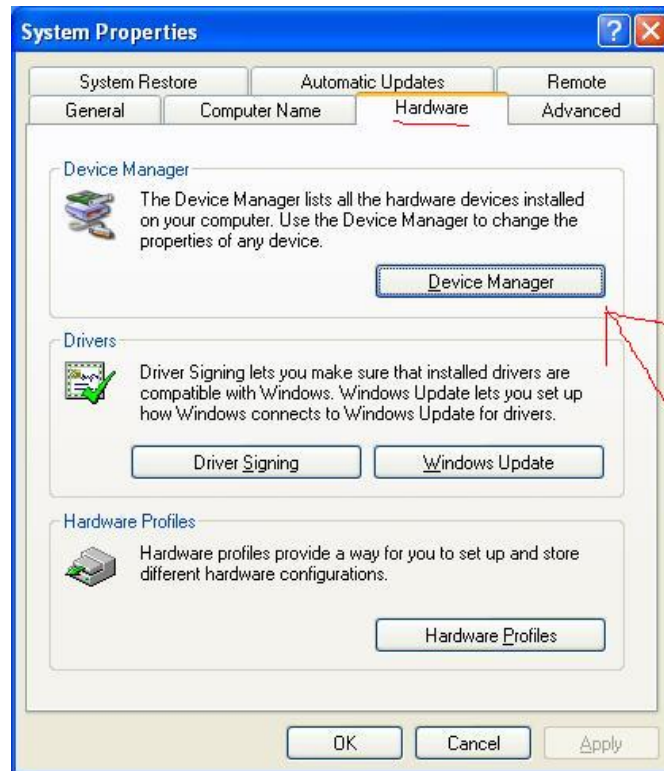


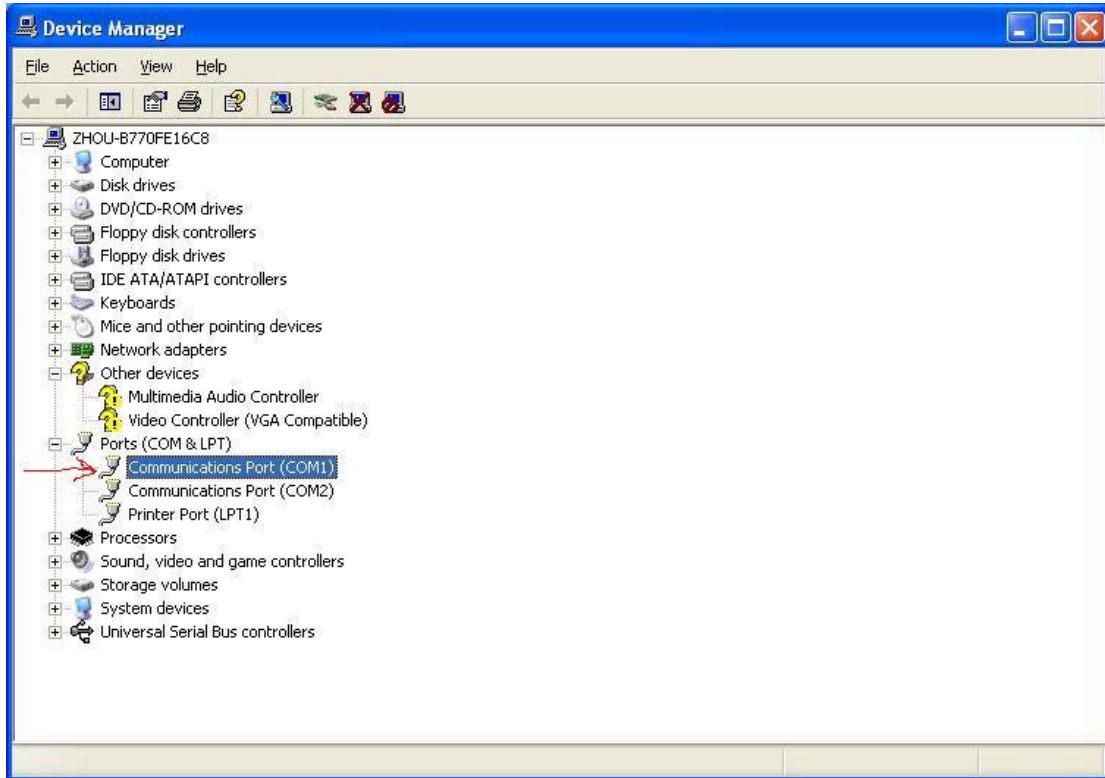
- 1.Plug the Device and install the usb driver.
- 2.use right mouse botton click<My Computer>——Click<Properties>



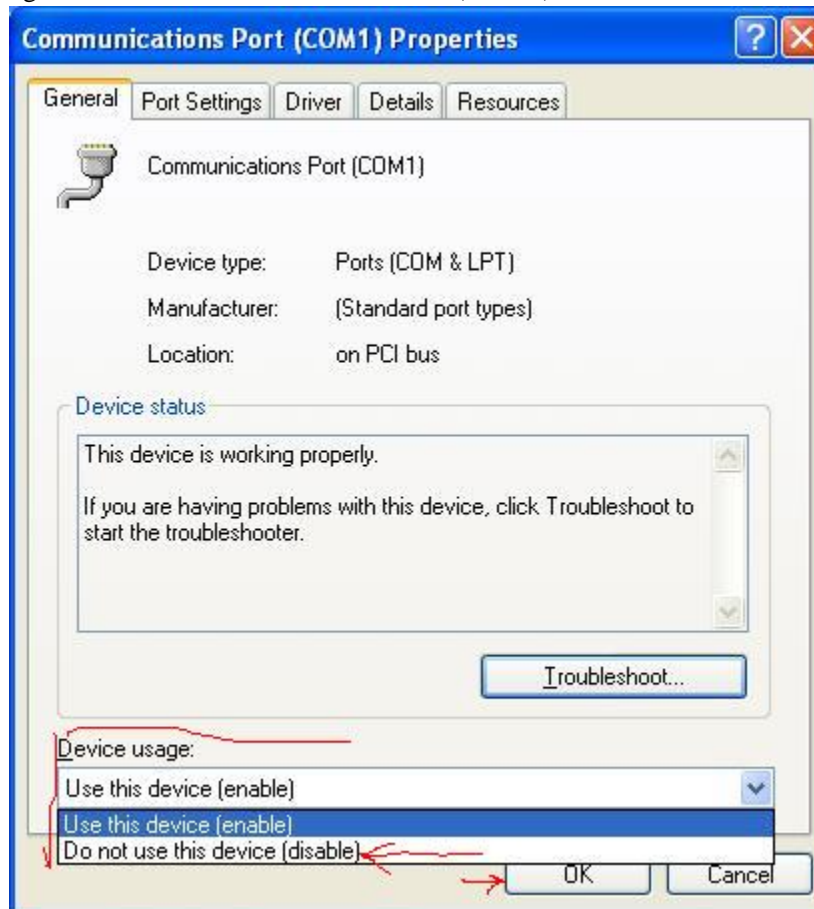
3. Click<Hardware>Option——<Device Manager>



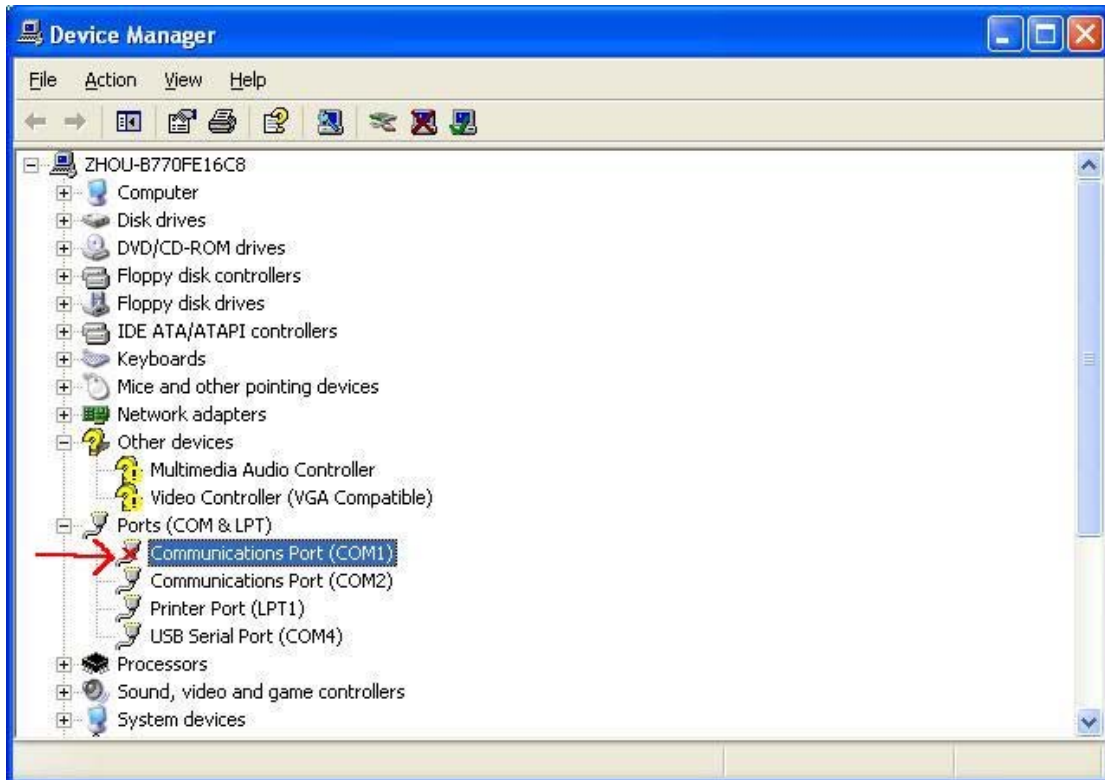
4. Double click <Communications Port(COM1)>



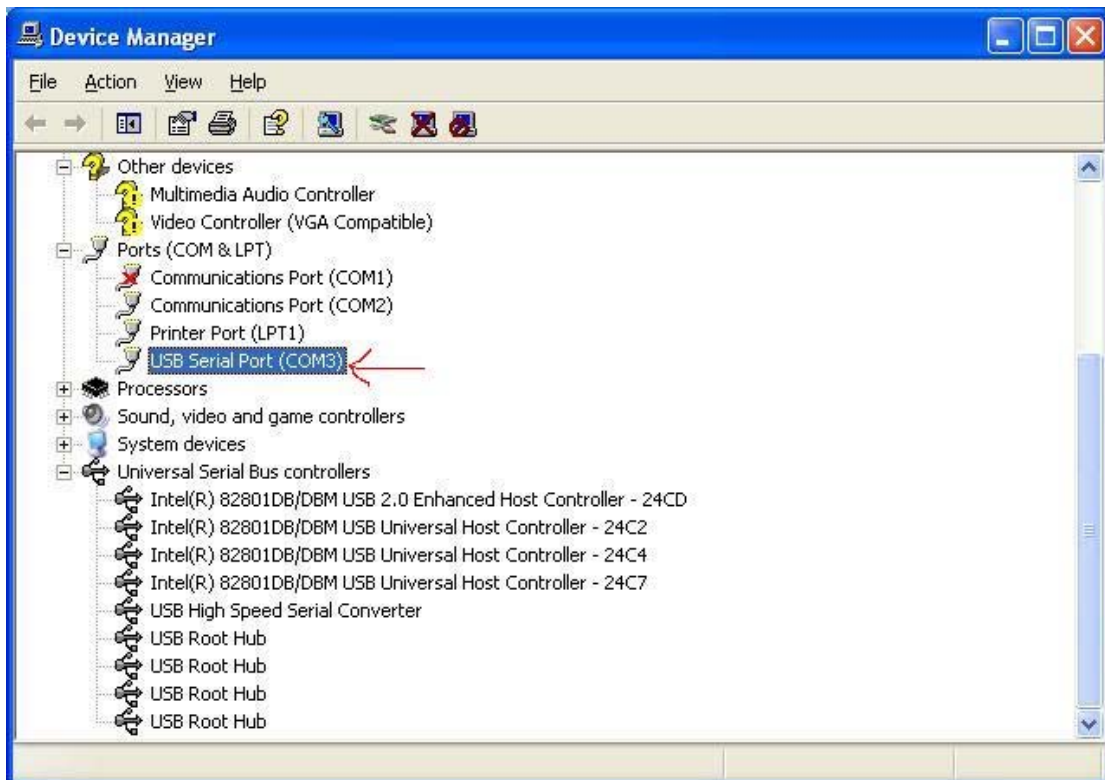
5. <Device usage>——Select<Do not use this device(disable)>——Click<OK>



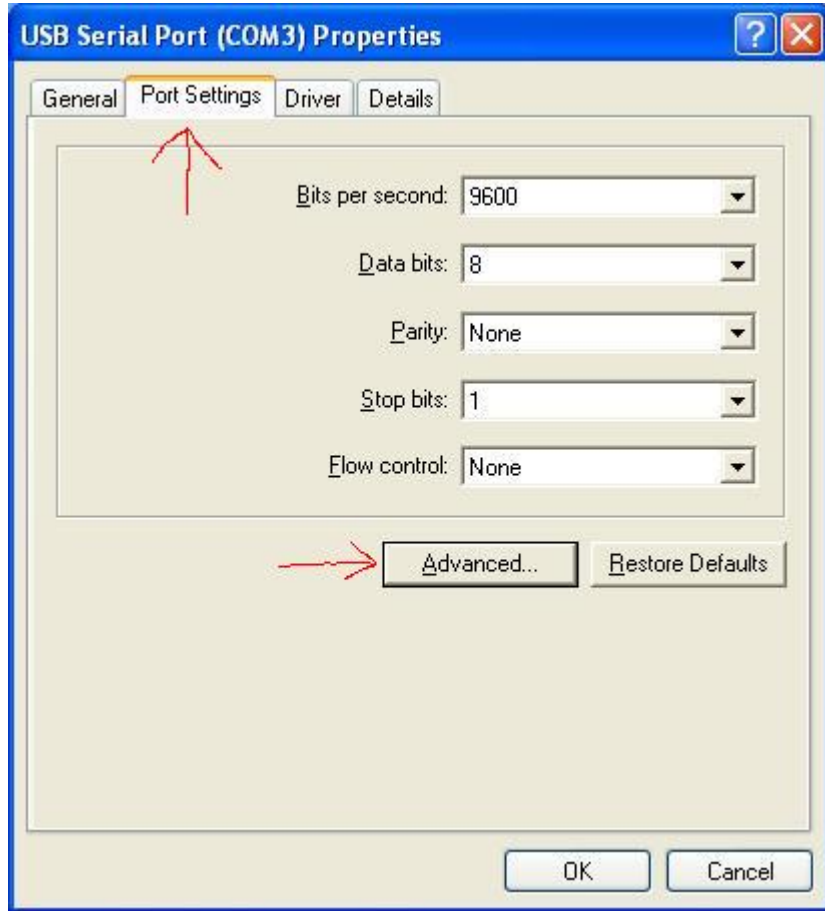
6. there is a red "X" flag at the <Communications Port(COM1)>.Show that it is disable.



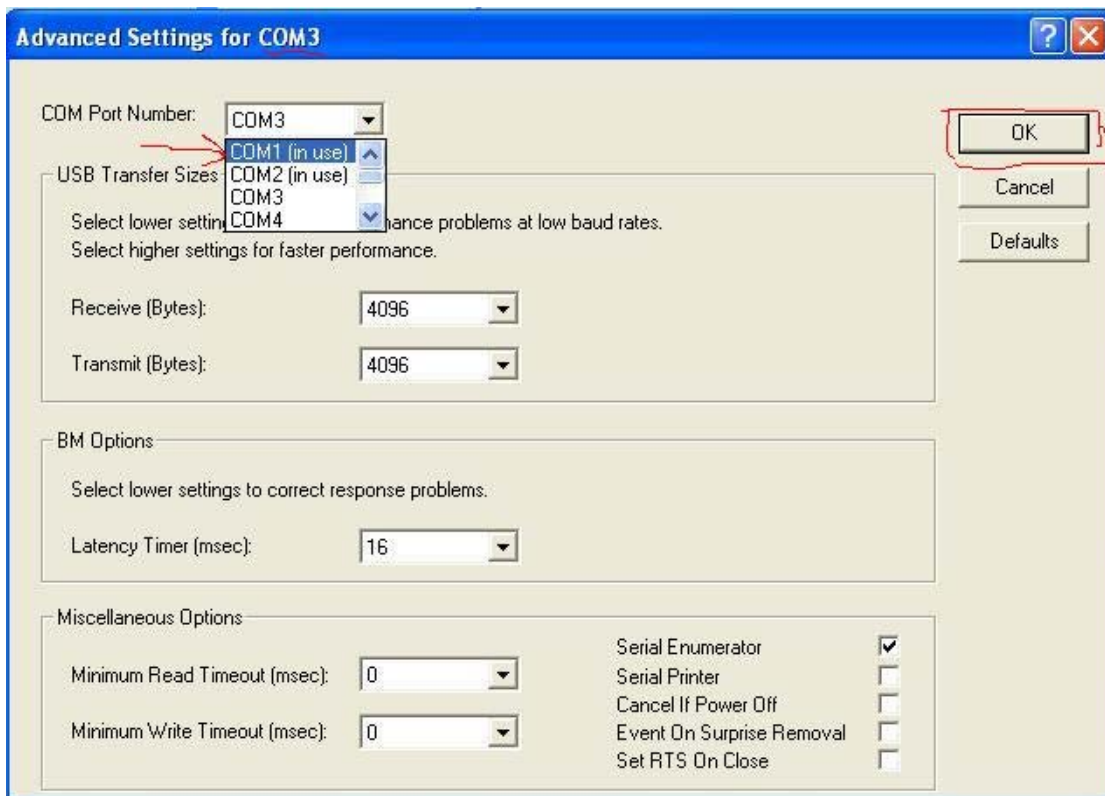
7.Double click <USB Serial Port (COM3)>,(Tip:the (COM3) is possible show as COM4,COM5 or other number.)



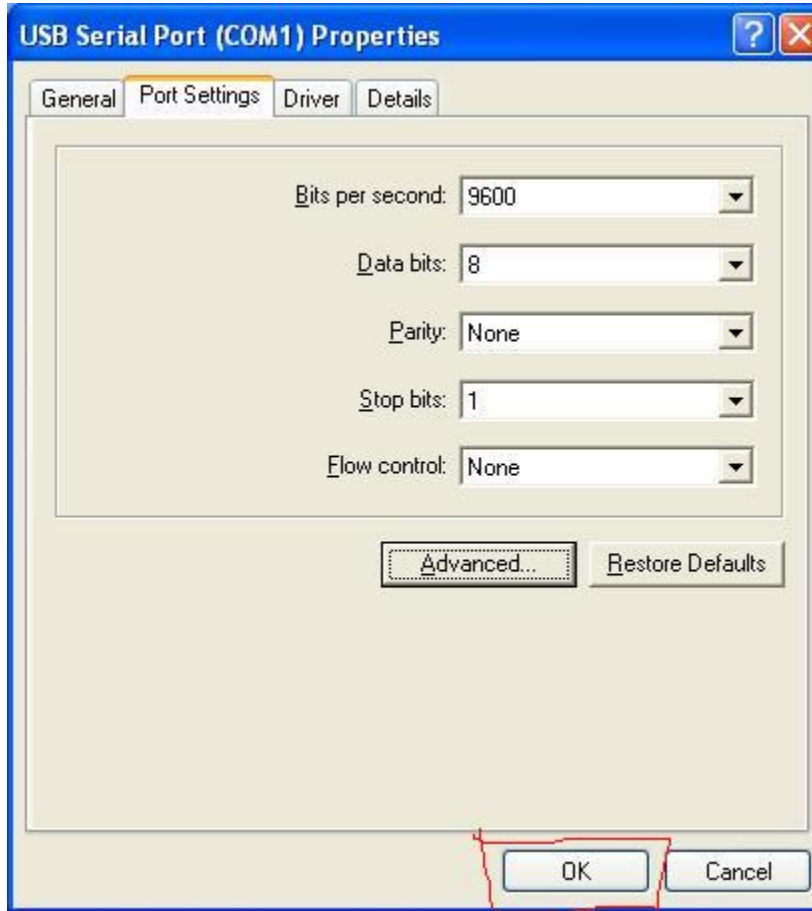
8 .Click<Port Settings>and click <Advanced>option.



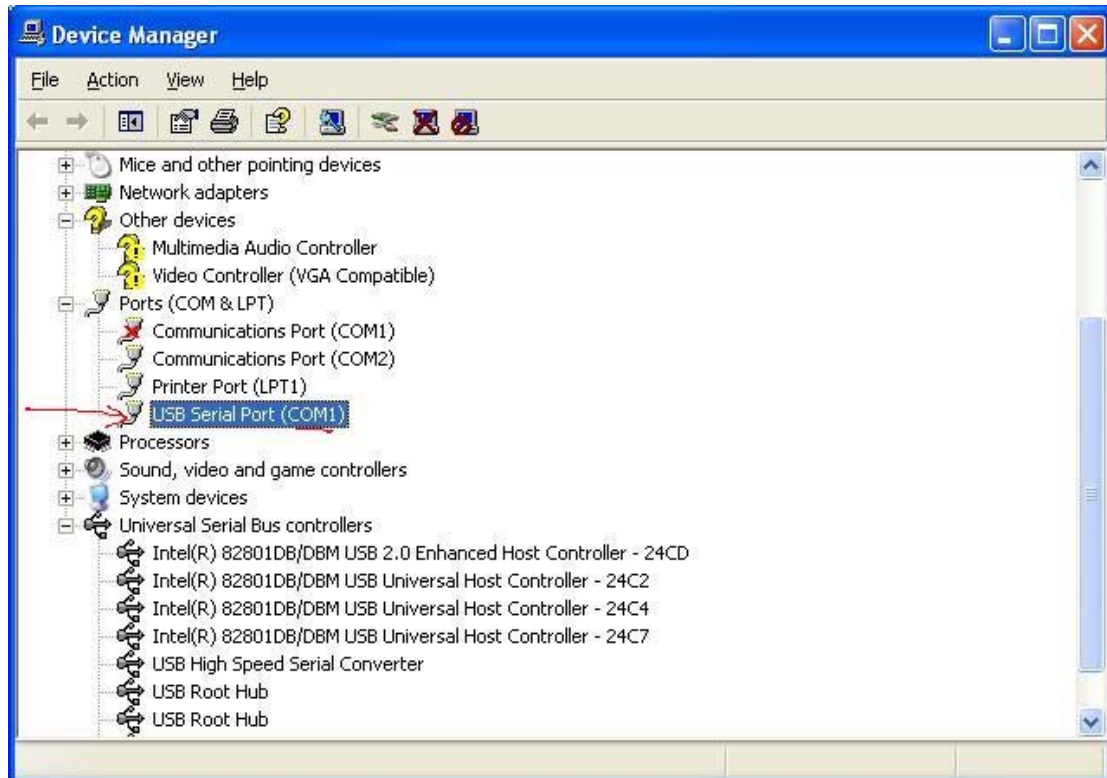
9. Change the <COM Port Number>is <COM1(in use) and click <OK>.



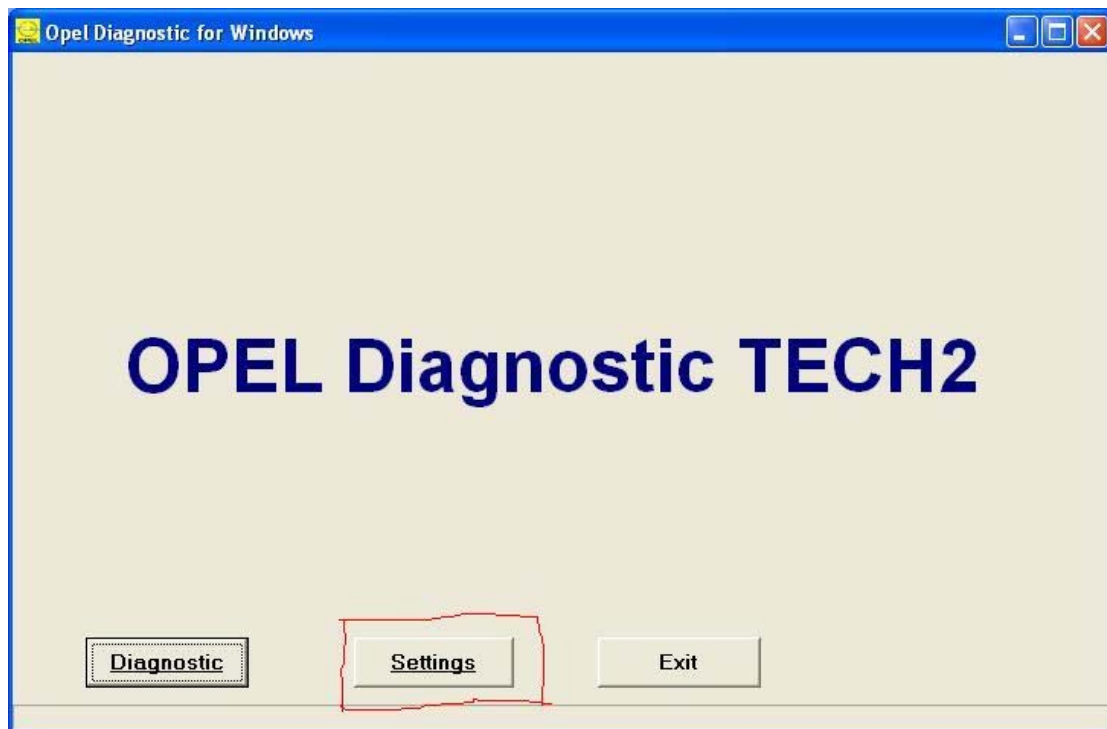
10 .Click <OK>



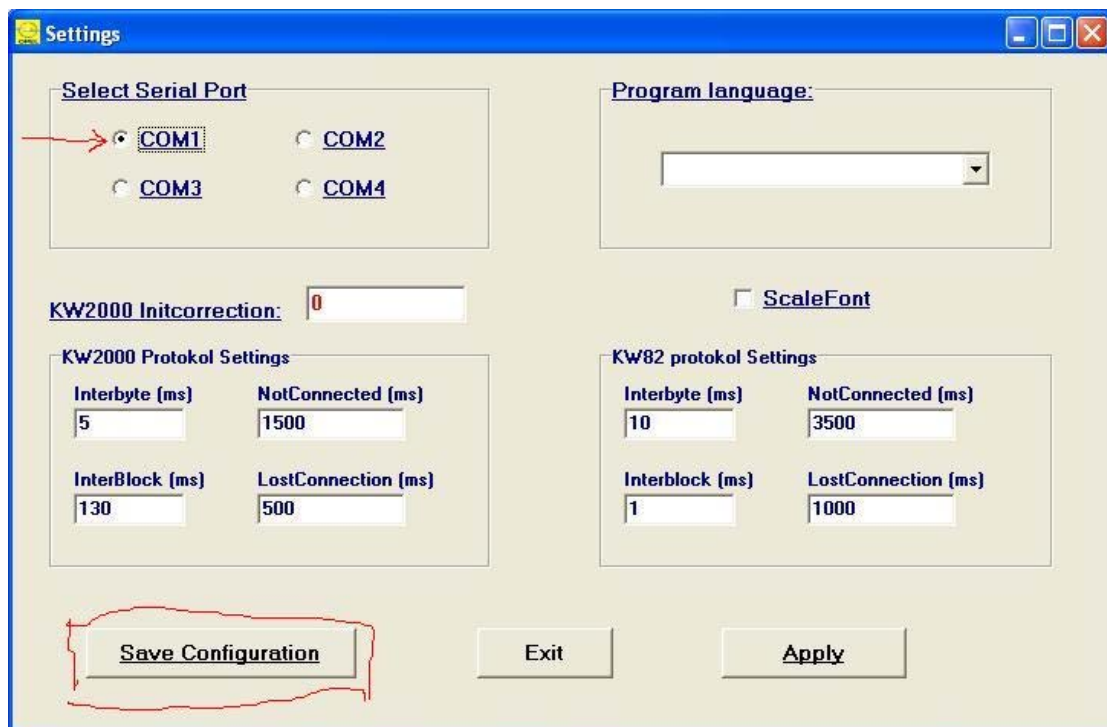
11 .Pull out OPEL-TECH USB device form computer and plug it again, You will see that <USB Serial Port (COM1)>.



12. Open the the software Opel Diagnostic for Windows and click <Settings>.



13 .Select COM1, and Save Configuration.



14. Here, you can test the vehicle according to the user manual of application software.