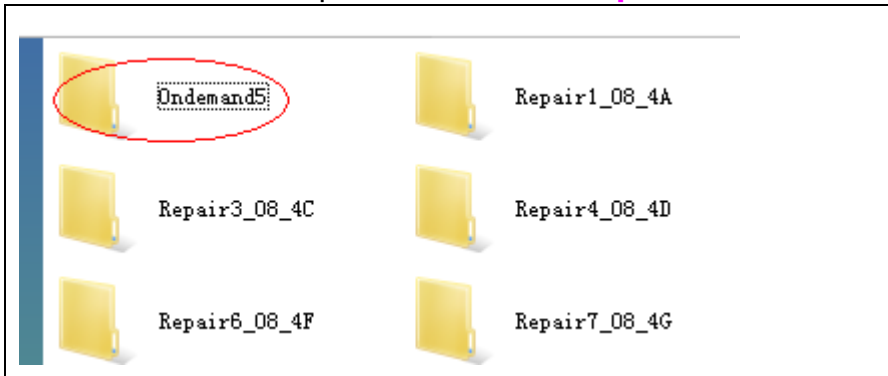
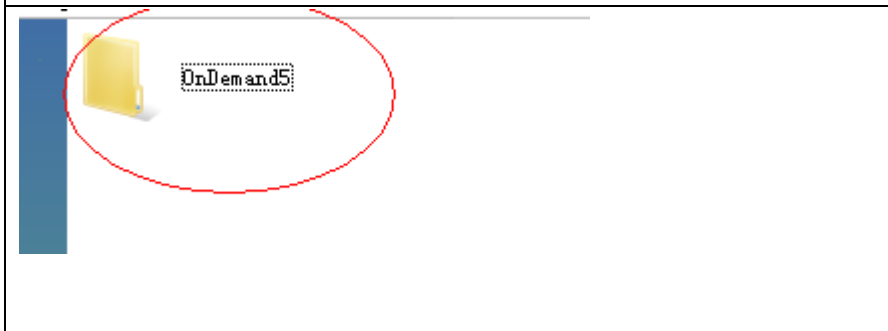

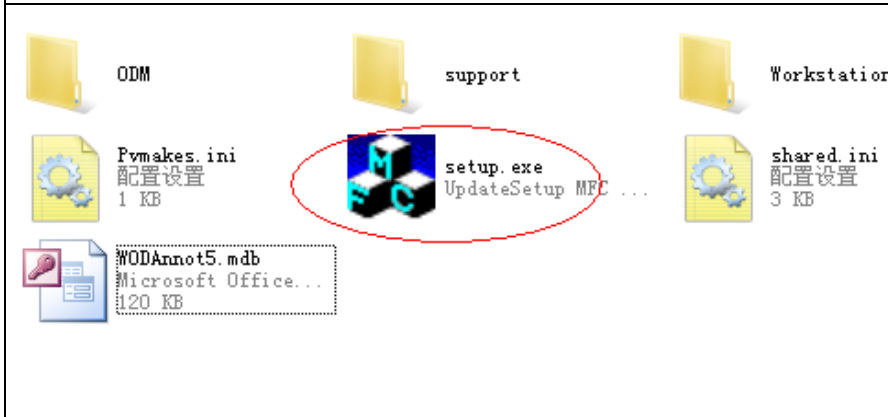
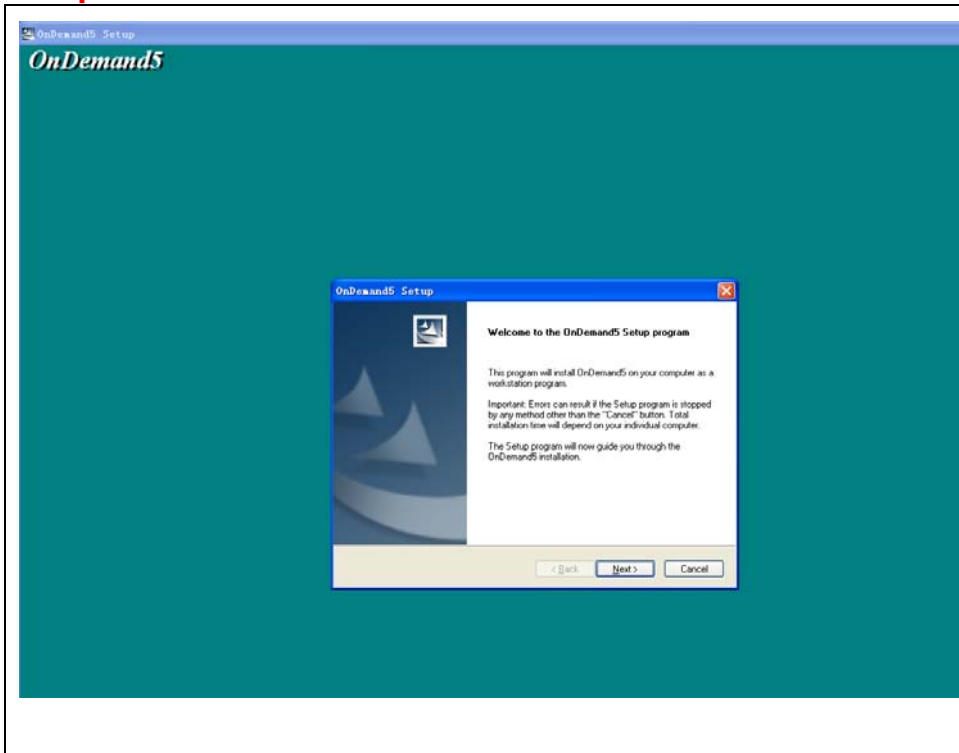
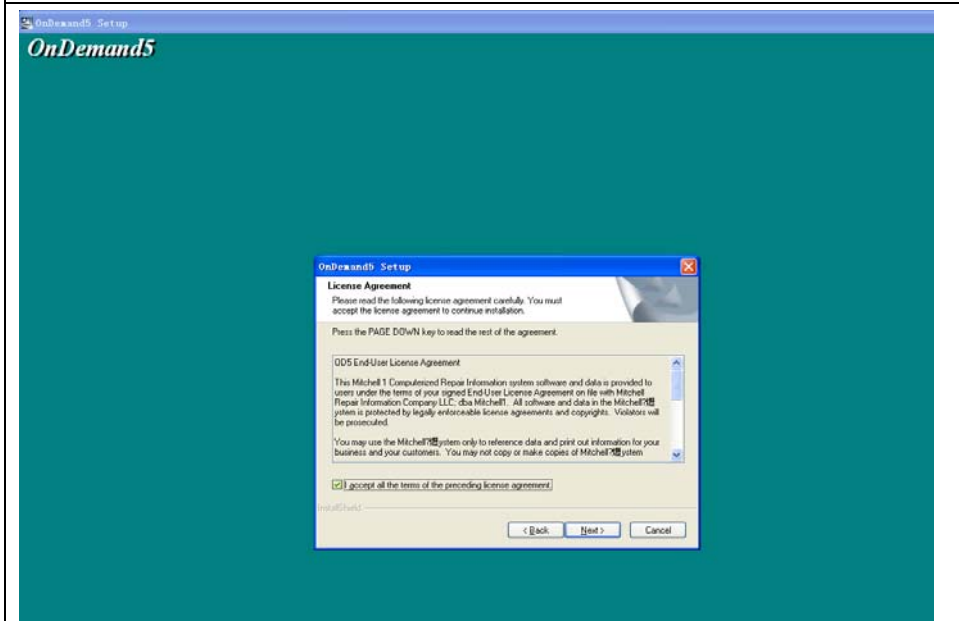
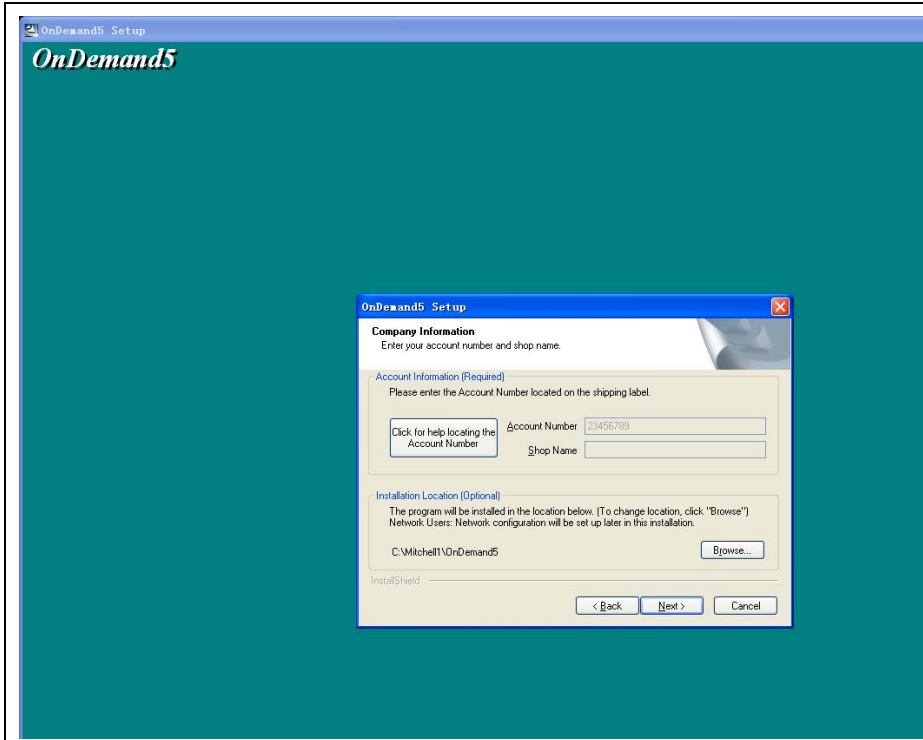


**Step 1:** copy folder **OnDemand5** to F disk. then open **OnDemand5**; find **Shared** and open, run the **setup.exe** file to install.

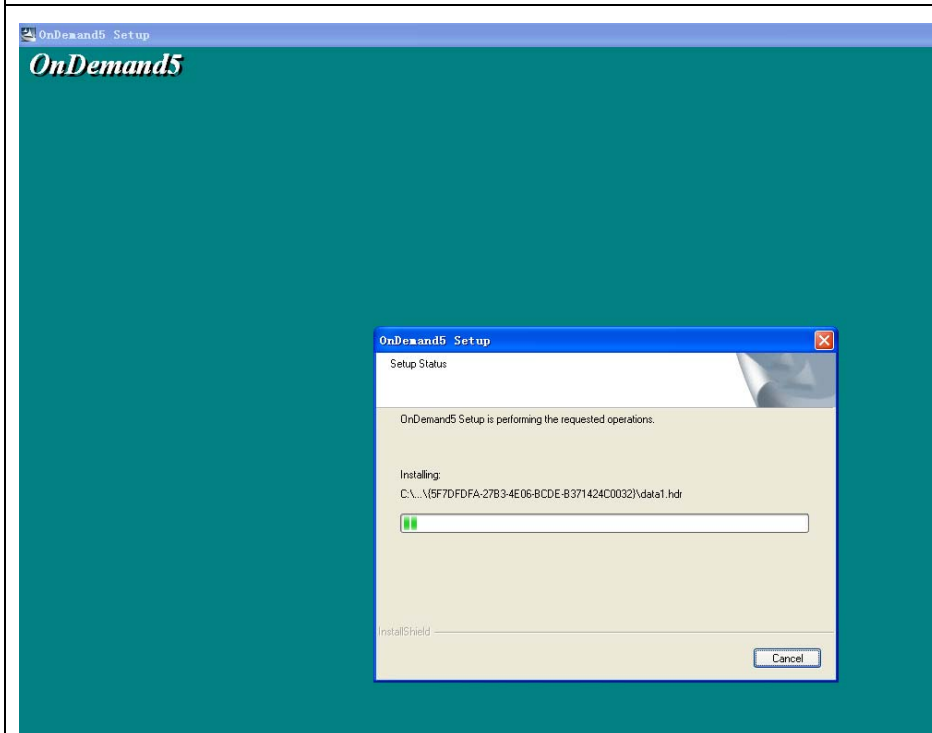
	<p>Open the folder <b>setup</b></p>
	<p>Open the folder <b>OnDemand5</b></p> <p><b>Attention :</b> when you <b>Complete installation</b>,don't delete this folder, or You will not be able to use it normally.</p>
	<p>Open the folder <b>Shared</b></p>
	<p>Run <b>setup.exe</b></p>

**Step 2:**

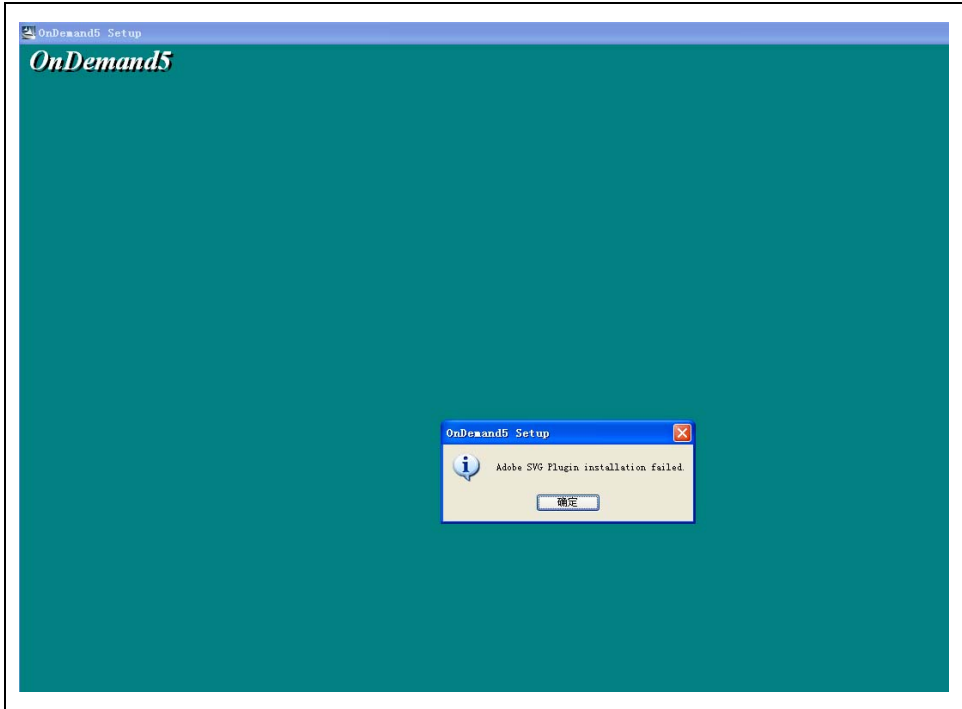
 <p>The screenshot shows a large teal window titled 'OnDemand5 Setup' with the 'OnDemand5' logo. In the center, a smaller dialog box titled 'OnDemand5 Setup' is open. It contains the text: 'Welcome to the OnDemand5 Setup program', 'This program will install OnDemand5 on your computer as a modulation program.', 'Important: Errors can result if the Setup program is stopped by any method other than the "Cancel" button. Total installation time will depend on your individual computer.', and 'The Setup program will now guide you through the OnDemand5 installation.' At the bottom of the dialog box are buttons for '&lt; Back', 'Next &gt;', and 'Cancel'.</p>	<p>When this dialog box appears, click &lt;Next&gt; to go on</p>
 <p>The screenshot shows the same teal window. The dialog box now displays the 'License Agreement' screen. It says: 'Please read the following license agreement carefully. You must accept the license agreement to continue installation.', 'Press the PAGE DOWN key to read the rest of the agreement.', and 'ODS End-User License Agreement'. The agreement text includes: 'This Mitchell 1 Computerized Repair Information system software and data is provided to users under the terms of your signed End User License Agreement on file with Mitchell Repair Information Company LLC, dba Mitchell1. All software and data in the Mitchell1 system is protected by legally enforceable license agreements and copyrights. Violators will be prosecuted.' and 'You may use the Mitchell1 system only to reference data and print out information for your business and your customers. You may not copy or make copies of Mitchell1 system.' At the bottom, there is a checked checkbox with the text 'I accept all the terms of the preceding license agreement.' and buttons for '&lt; Back', 'Next &gt;', and 'Cancel'.</p>	<p>Select <b>I accept all the terms of preceding license agreement</b>, then click &lt;Next&gt; to go on</p>

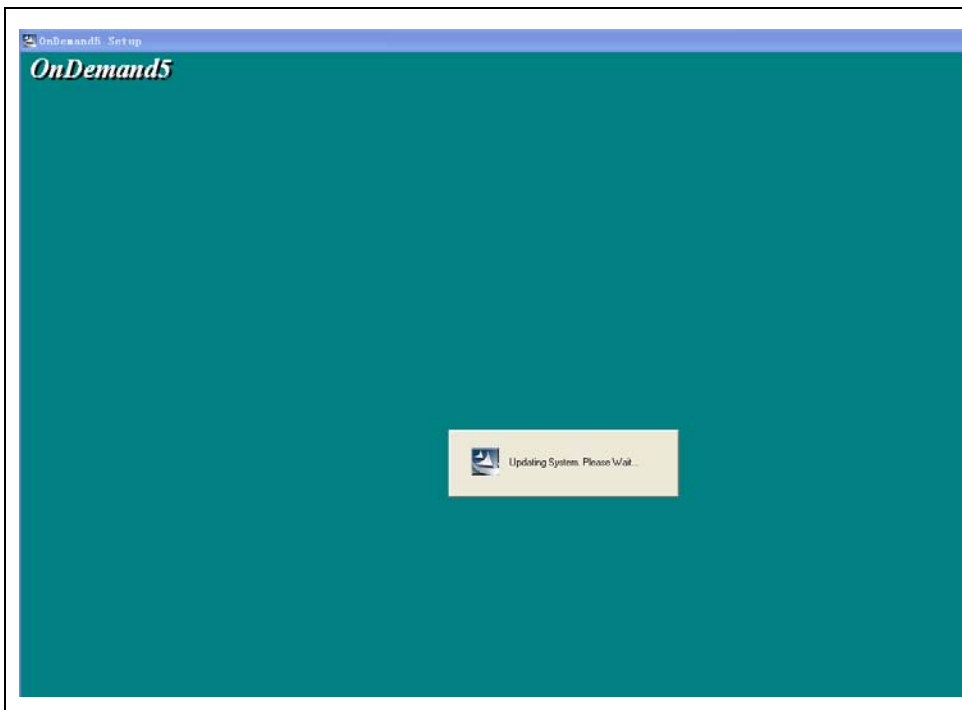


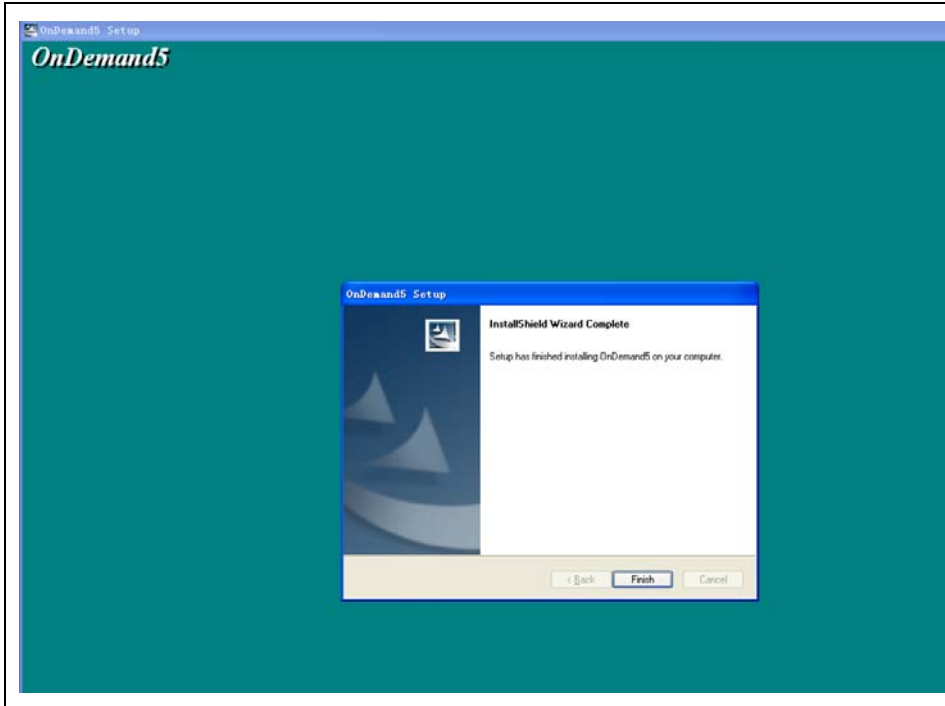
click <Next>  
to go on



installing

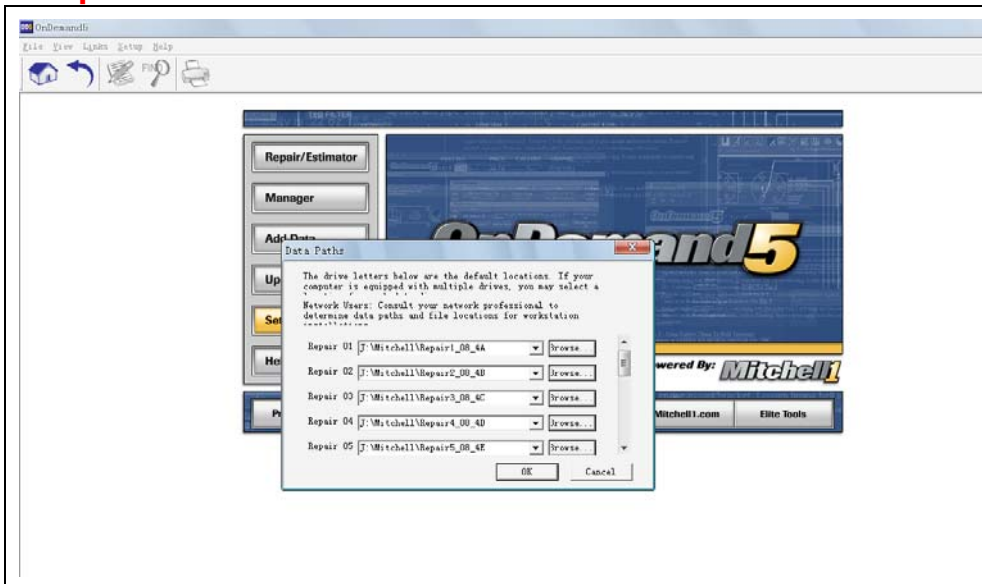
	click <OK> to go on
--	---------------------------

	installing
---	------------



Click **finish** to complete

**Step 3:**



After finish, there will be dialog box like this picture.

	<p>In this dialog box load the data paths at one time.          (In the second folder A to K are the data folders, write the folders' paths to the DATA Paths dialog box Repair 1 to 13 in turn. As picture shows, the data file is on the J: disk, mitchell folder, so the data file path for Repair 1 is H: \ mitchell \ Repair1_08_4A, so on and so forth, write the other paths in turn, then select OK to finish the data loading) .</p>
	<p>Software installation is completed, run <b>OnDemand5</b> desktop icon to use the software</p>