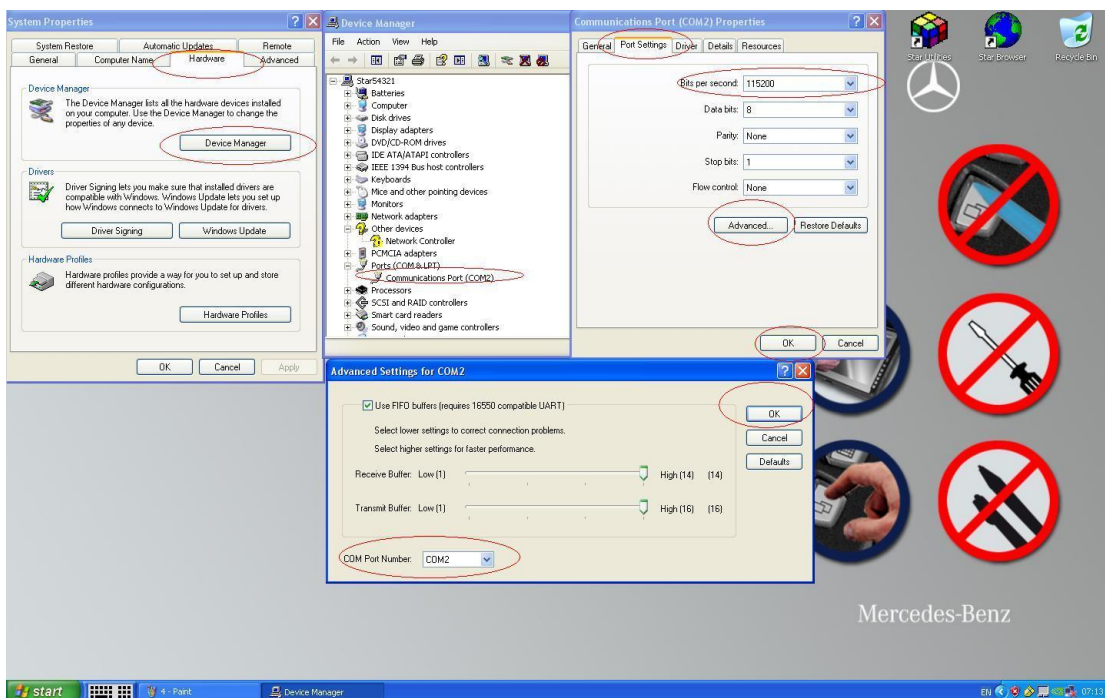
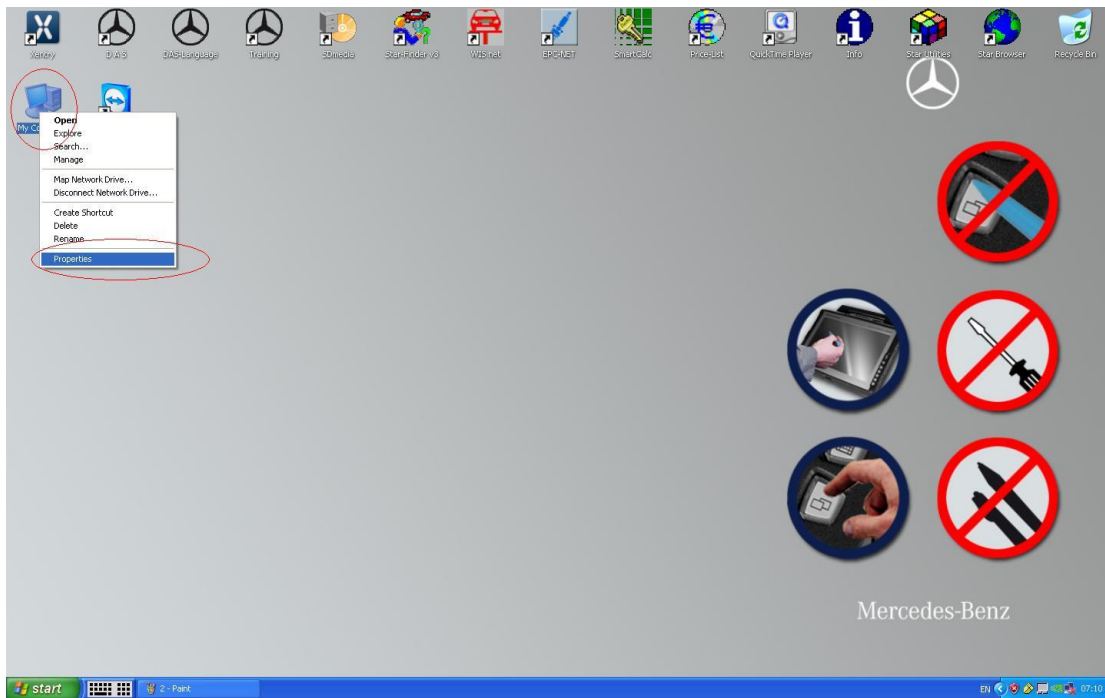


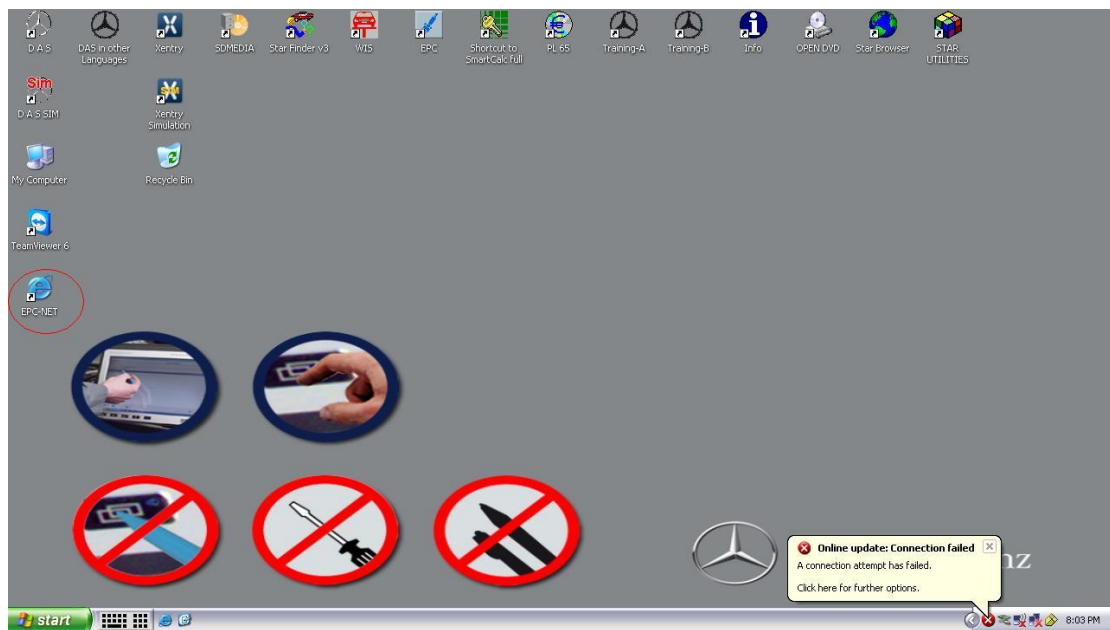
Open your STAR

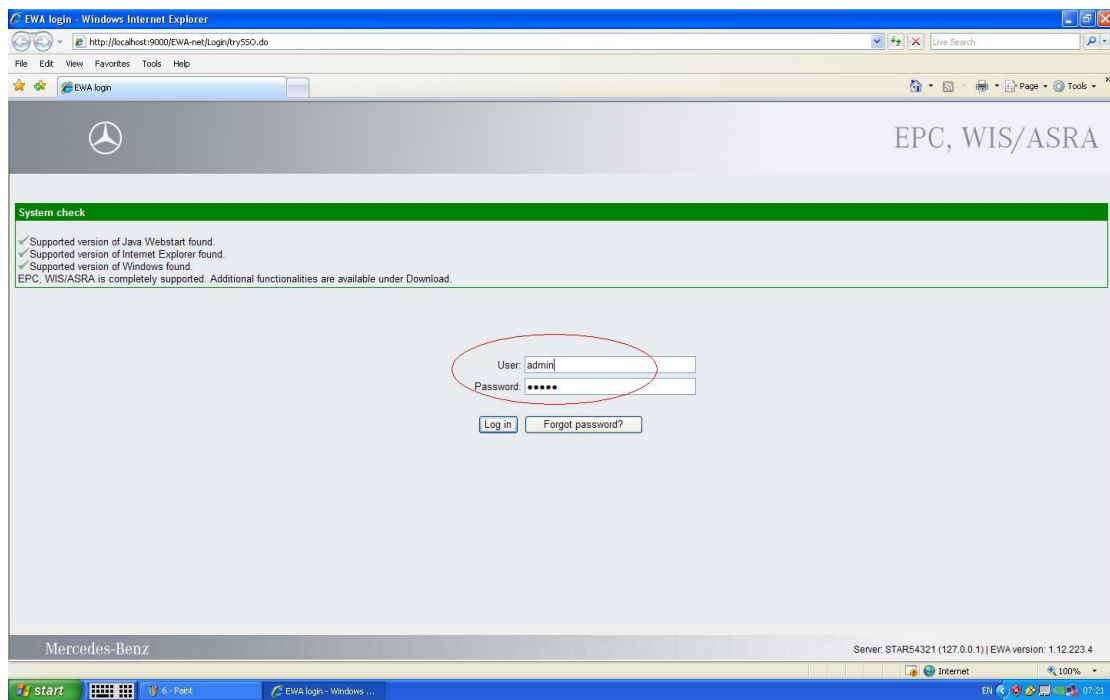
Setup your COM Port



COM 2 115200

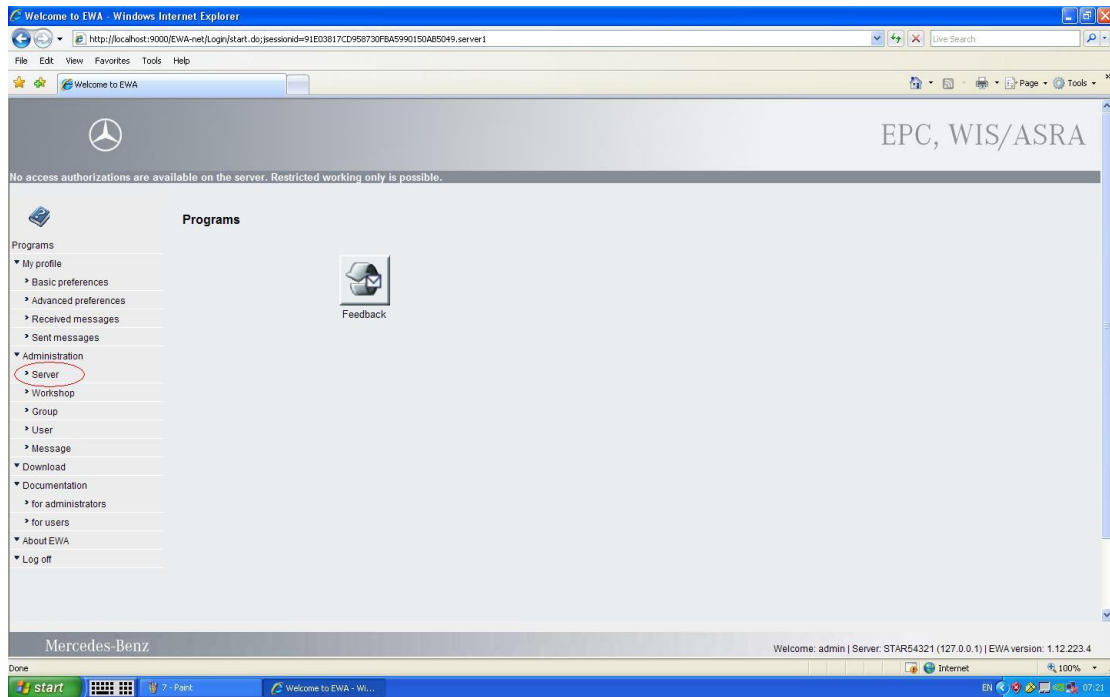
Open the EPC-NET



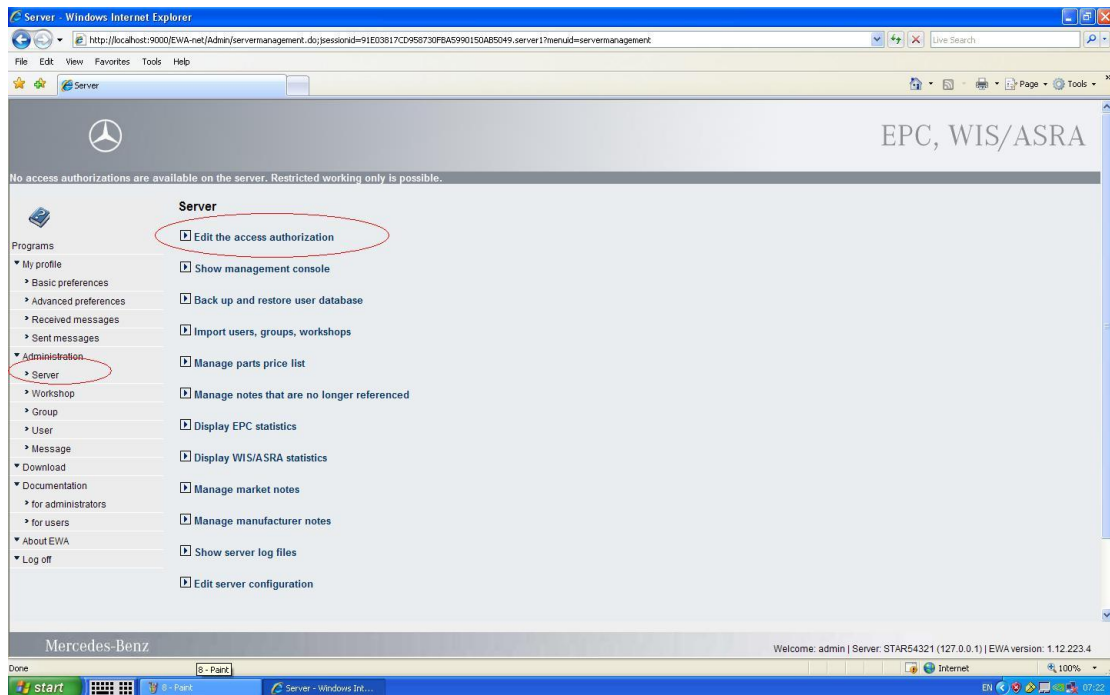


User: admin Password: 12345

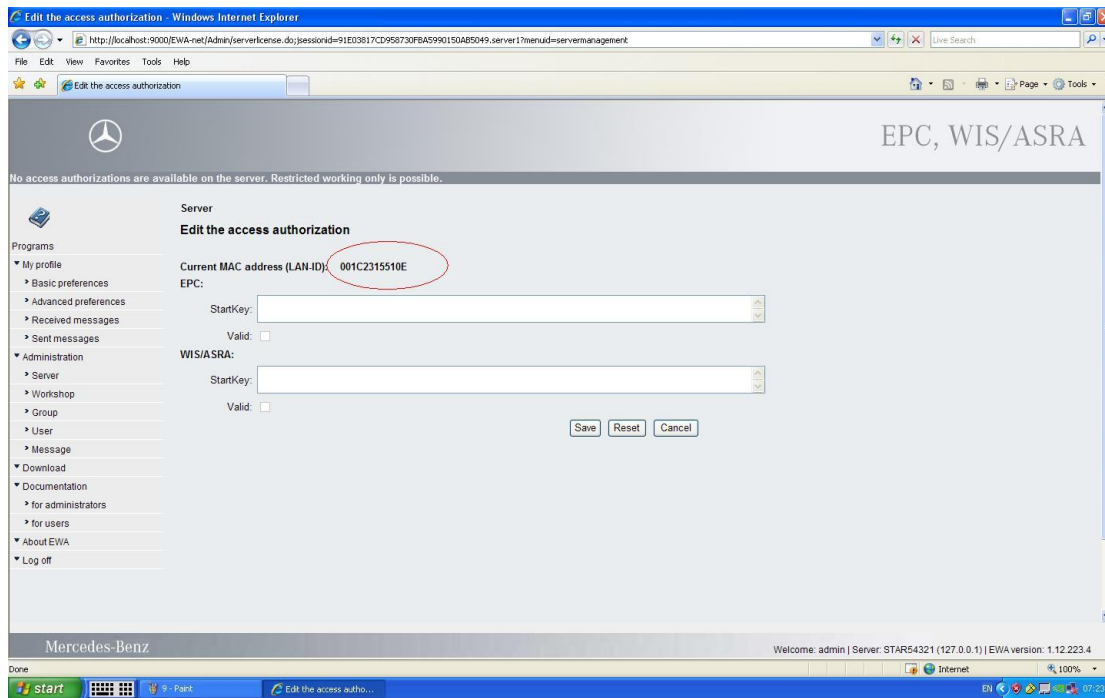
Open the [Server](#)



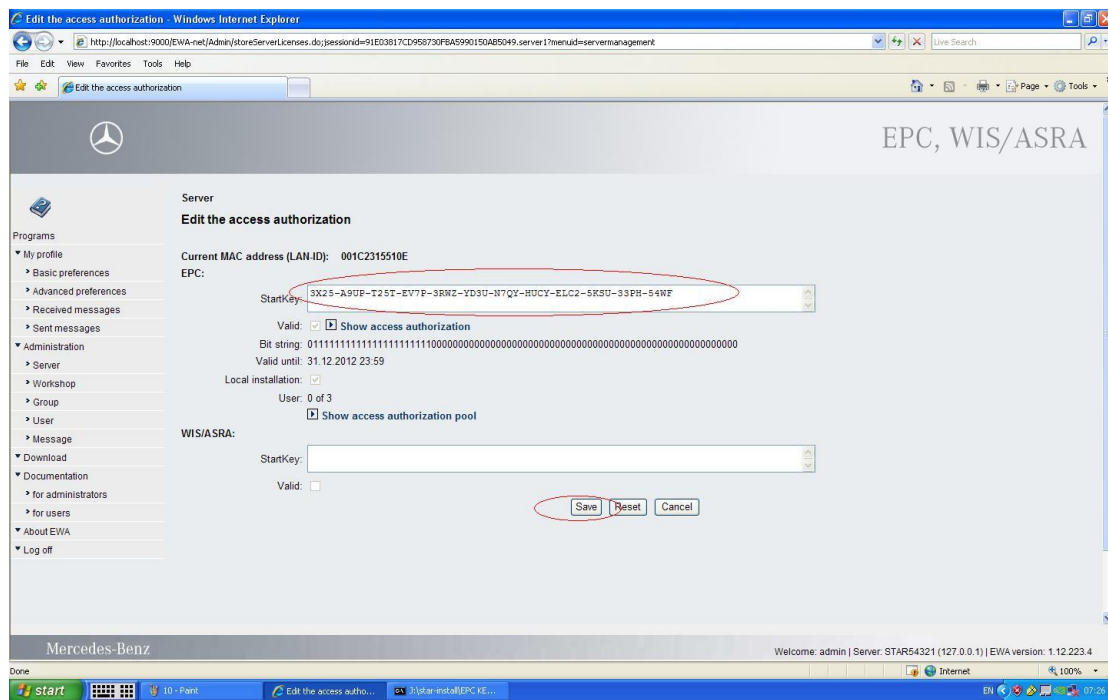
Open Edit the access authorization



Send to us your **LAN-ID**



We will give you a new **StartKey**

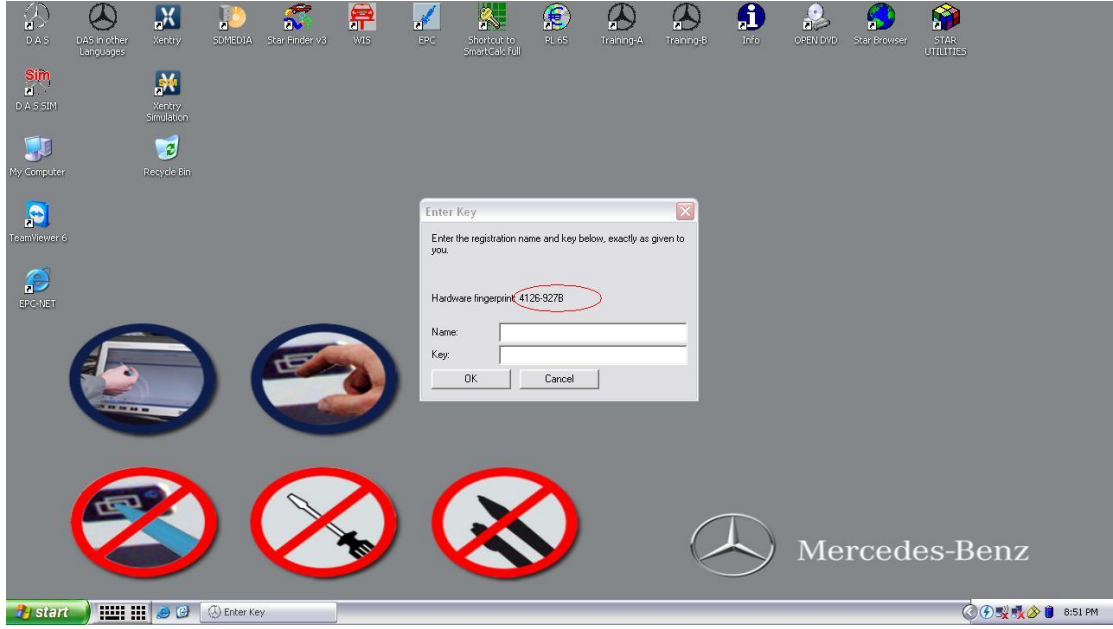


Paste the new **Startkey**

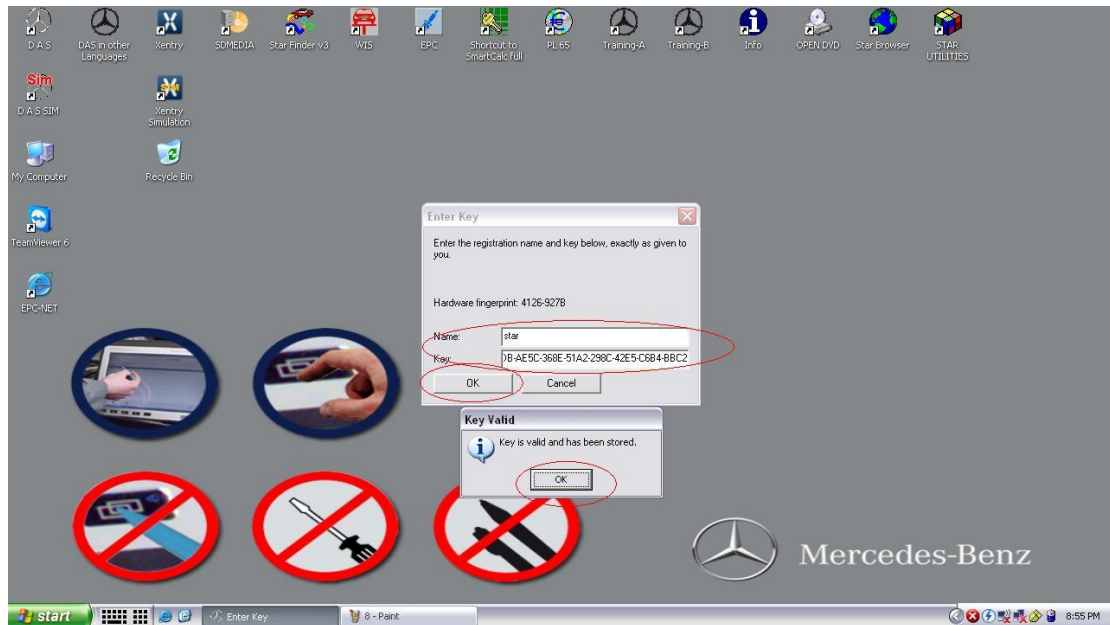
Open DAS



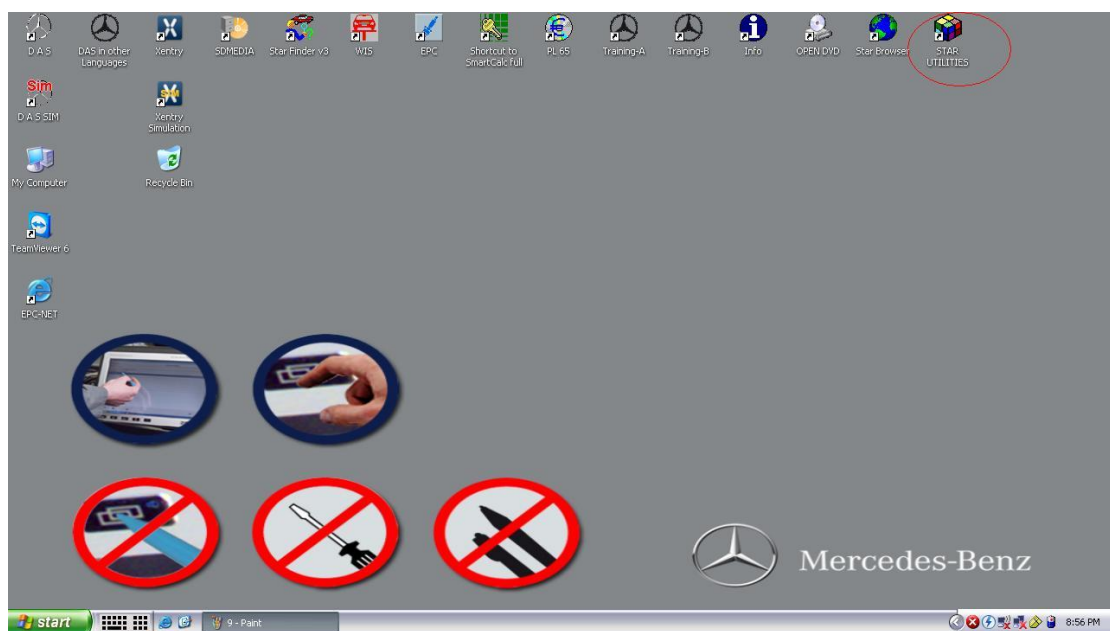
Send to us this number



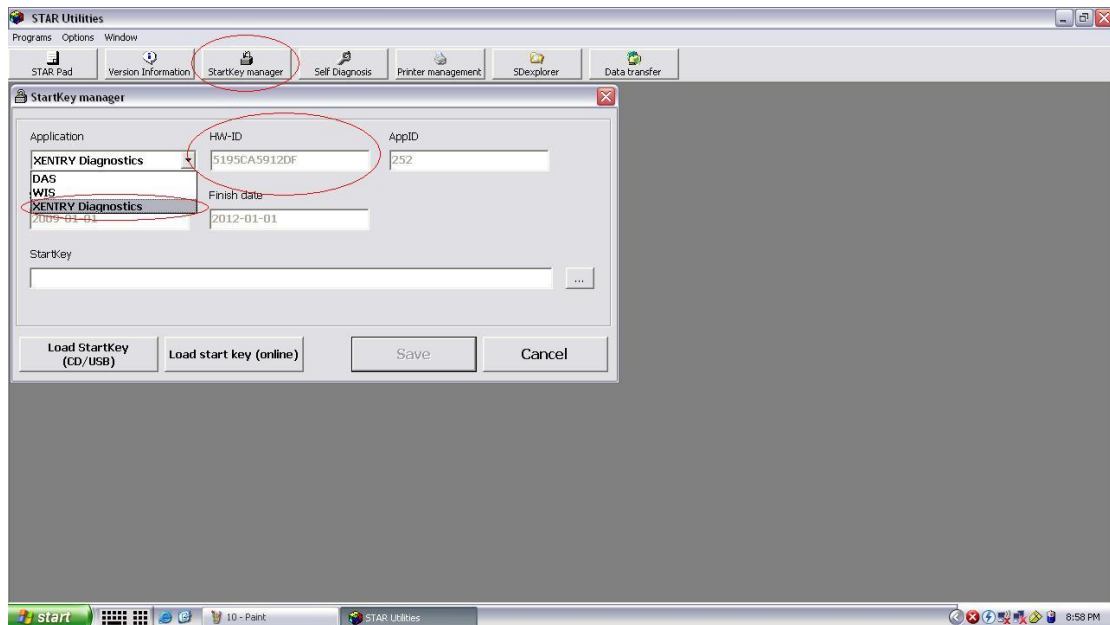
We will give you the **name** and **key**



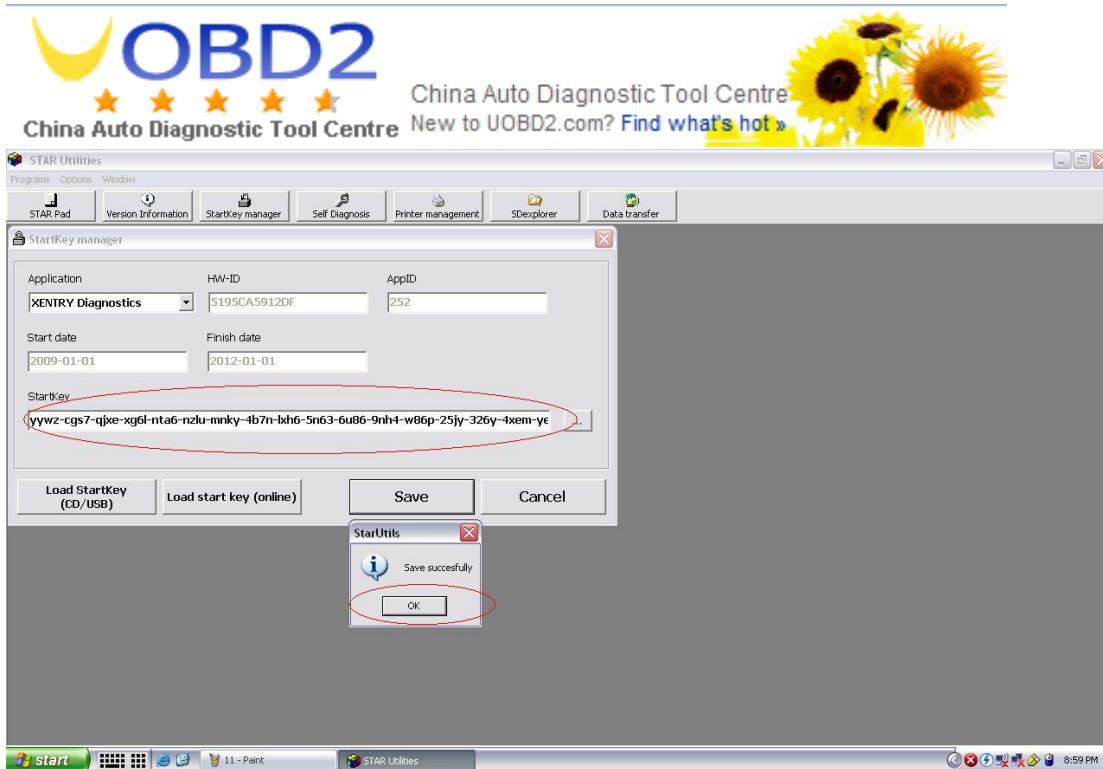
Open Star Utilities



Send to us your **Xentry HW-ID**



We will give you the **StarKey**



Now everything is done.